

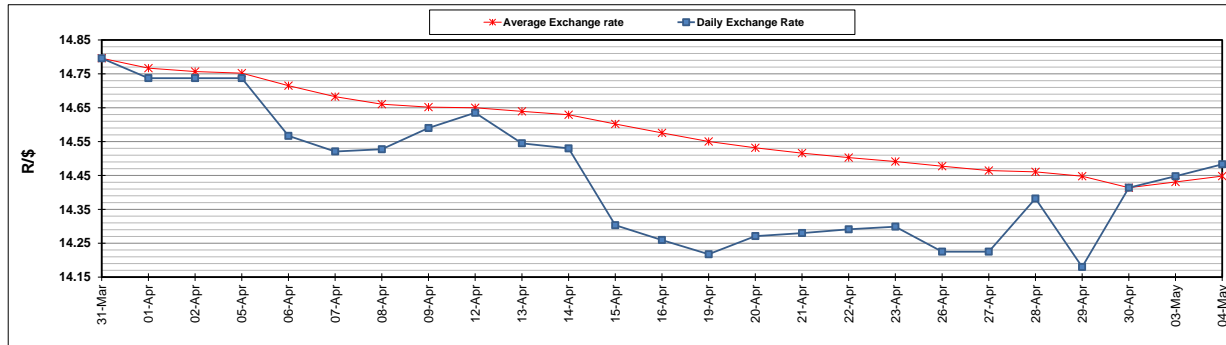
	PETROL 95 ULP	PETROL 93 ULP & LRP	DIESEL 0.05%	DIESEL 0.005%	ILL. PAR.
GAUTENG PUMP PRICE (SA c/l) AS FROM 05/05/2021	1,723.000	1,701.000	-	-	-
WHOLESALE PRICE (SA c/l) AS FROM 05/05/2021	-	-	1,446.620	1,450.020	857.488
SINGLE NATIONAL MAXIMUM RETAIL PRICE	-	-	-	-	1,076.000
BASIC FUEL PRICE - 04/05/2021 (SA c/l)	749.940	736.656	694.368	699.054	685.119
PRESS RELEASE CONTRIBUTION TO BFP 30/04/2021 - 04/05/2021 (SA c/l)	736.170	724.170	690.630	693.030	667.128
UNIT OVER/(UNDER) RECOVERY - 04/05/2021 (SA c/l)	(13.770)	(12.486)	(3.738)	(6.024)	(17.991)
AVERAGE BASIC FUEL PRICE 30/04/2021 - 04/05/2021	735.675	722.811	683.143	687.910	674.062
AVERAGE UNIT OVER/(UNDER) RECOVERY 30/04/2021 - 04/05/2021	0.495	1.359	7.487	5.120	(6.934)

ANALYSIS MOVEMENT OF AVERAGE OVER/(UNDER) RECOVERY

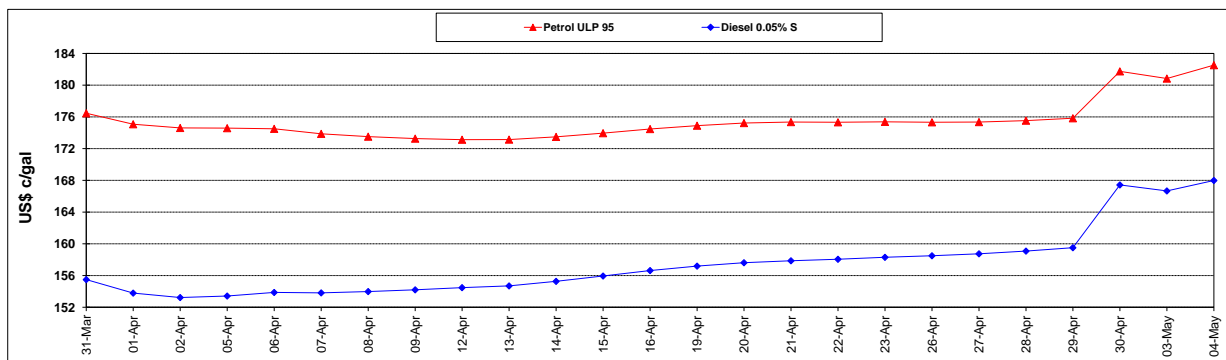
	PETROL 95	PETROL 93	DIESEL 0.05%	DIESEL 0.005%	ILL. PAR.
- MOVEMENT IN INTERNATIONAL PRODUCT PRICES	0.510	1.374	7.501	5.134	(6.920)
- MOVEMENT IN EXCHANGE RATE	(0.015)	(0.015)	(0.014)	(0.014)	(0.014)
AVERAGE UNIT OVER/(UNDER) RECOVERY 30/04/2021 - 04/05/2021	0.495	1.359	7.487	5.120	(6.934)

R/\$ EXCHANGE RATE - (R/\$14.4830- 04/05/2021)

EXCHANGE RATE USED IN BASIC FUEL PRICE



INTERNATIONAL PRODUCT PRICES OF BASKET USED IN BASIC FUEL PRICE



BASIC FUEL PRICE IN SA CENTS PER LITRE

